

» CARBIDE AND COATINGS

**CRUSHING  
MILLING  
PELLETIZING  
RECYCLING**

**Hard and strong performance.**

**DURIT**



# » CARBIDE TECHNOLOGY

Parts, tools and components made of cemented carbide are **the ultimate in wear resistance and longevity** and **ensure utmost versatility**. DURIT carbide solutions stand up to the toughest demands.

## » DEDICATED TO CARBIDE

**Carbide from a single source**—from blanks to high-precision final products. DURIT produces **customized parts** and realizes **individual shapes** as well as **complex geometries**.

## » WE OFFER FULL-SERVICE CARBIDE

### HARDFACTS

#### » DURIT HARTMETALL

##### » SINCE 1982

Successful and solution-oriented

##### » OVER 500 EMPLOYEES

Worldwide

##### » MORE THAN 60 CARBIDE GRADES

For wear protection and metal forming

##### » 100% COATING EXPERTISE

HVOF, APS, EAWS,  
Laser Cladding, PVD and CVD



# » WEAR PROTECTION FOR CRUSHING, MILLING, PELLETIZING, RECYCLING

Crushing and milling hard recyclable materials puts extreme demands on tools, parts and components. In these applications, cemented carbide features a much higher break resistance than ceramics and **a much higher wear and pressure resistance than other materials**. DURIT creates first-class solutions for all requested applications.

## » WE SOLVE WEAR PROBLEMS

DURIT HARTMETALL has offered convincing solutions in the field of powder processing, pelletizing and recycling for years. The **durability of DURIT components** is also appreciated in industries that process secondary or natural materials.

## » WITHSTANDS MOST EXTREME DEMANDS



### Products ::

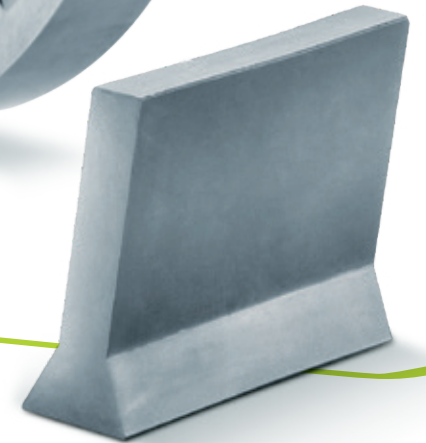
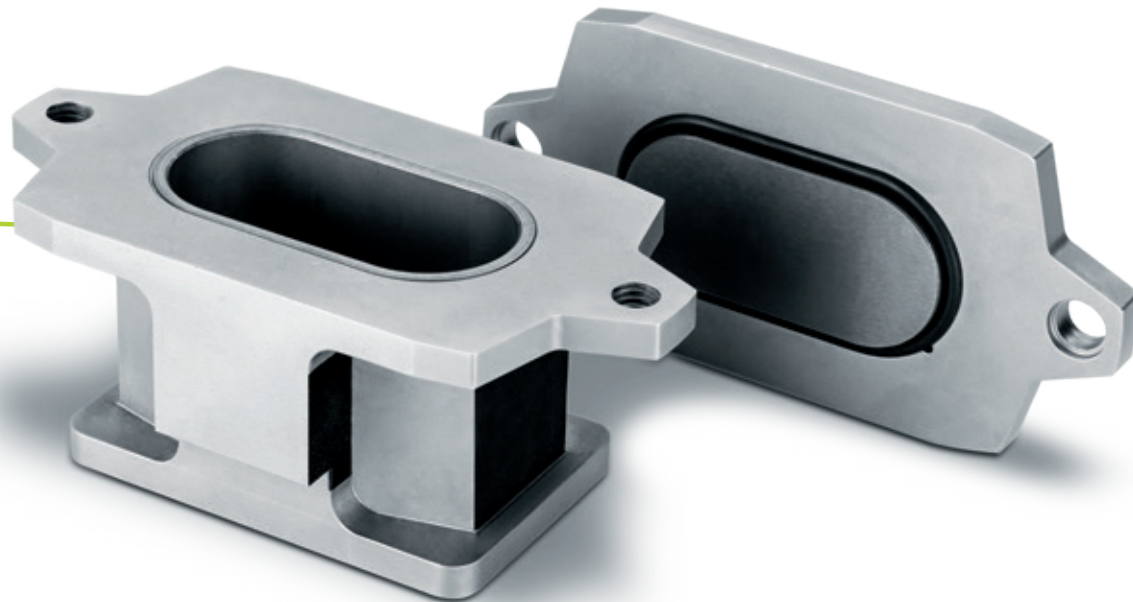
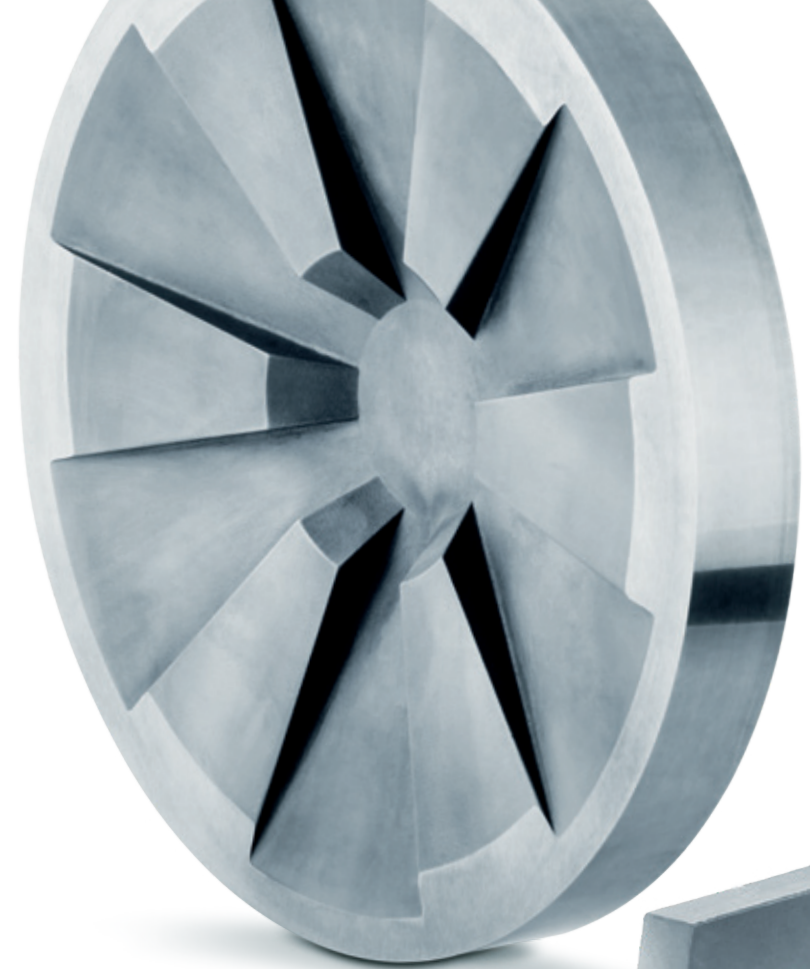
grinding bowls · mill rings · millstones · milling pins · milling discs · milling cones · impact strips · impact feed · pestles · blade strips · crusher rollers · crusher jaws and plates · sieve rings · linings · pins · strippers · perforated plates

### Typical applications ::

pin mills · laboratory mills · cone mills · impact mills · hammer mills · shredders · pelletizers · jaw crushers · roller crushers

## Selection of application-specific carbide grades ::

GRADE	Composition	Binder (%)	Grain size	Hardness (HV30)	Fracture toughness (MPa * m <sup>1/2</sup> )
GD08F	WC-Co	8,00	submicron	1625	10
GD13F	WC-Co	10,00	submicron	1540	12
GD10	WC-Co	6,00	medium	1600	10
GD20	WC-Co	10,00	medium	1350	15
GD30	WC-Co	15,00	medium	1150	15,5
BD05	WC-Co	6,00	coarse	1450	15
BD10	WC-Co	9,00	coarse	1250	16
BD20	WC-Co	10,00	coarse	1215	19



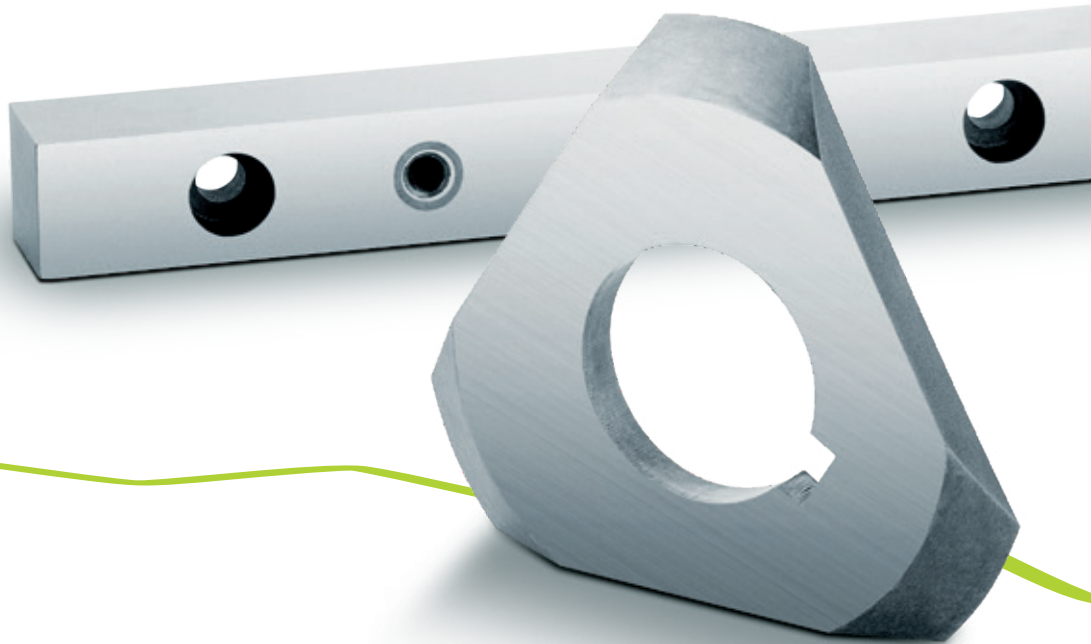
# » DURIT QUALITY REPRESENTS BEST RESULTS

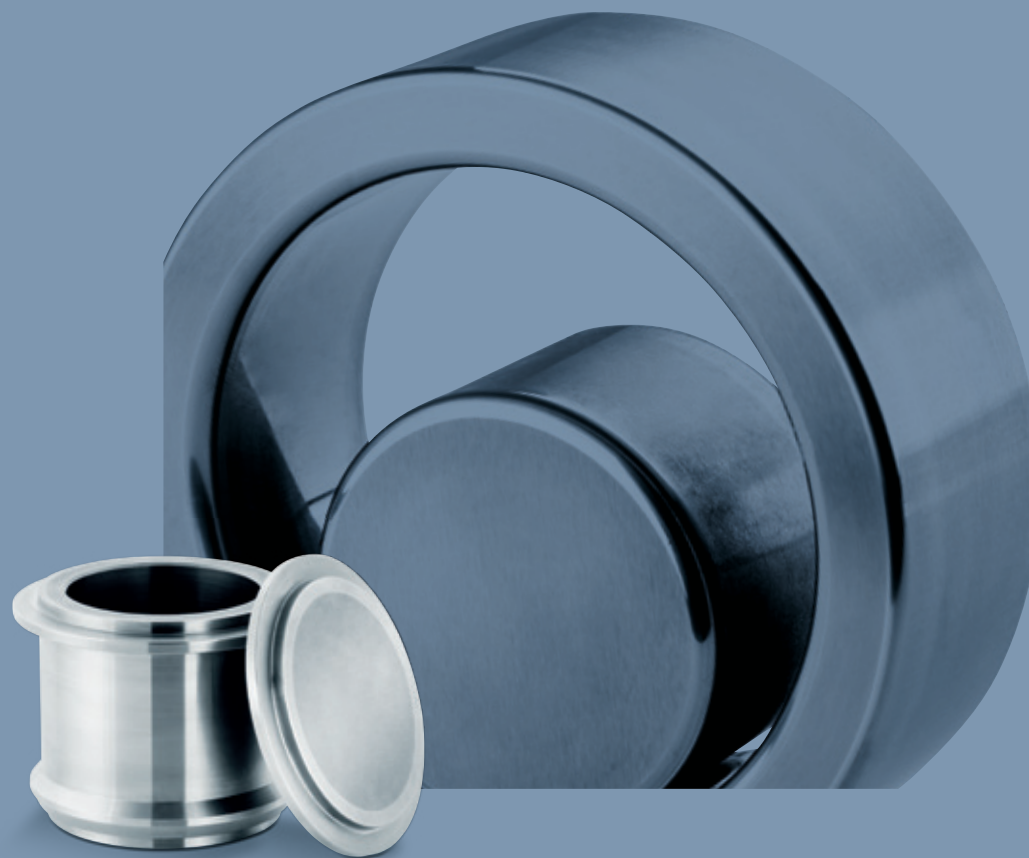
As one of few **complete suppliers in the market**, DURIT offers an all-encompassing concept from consultation, development and design, all the way to production of highly accurate components.

## » CARBIDE FROM A SINGLE SOURCE

Our products are designed with a focus on **dimensional accuracy, continuity** and **value enhancement**. Therefore, all our production sites are equipped with state-of-the-art technology. In particular, we attach great importance to our **process-oriented quality management**.

## » QUALITY AND ADDED VALUE THROUGH CERTIFIED PROCESSES





» **DURIT METALURGIA PORTUGUESA  
DO TUNGSTÊNIO, LDA.**

Zona Industrial – Arruamento C  
3854-184 Albergaria-a-Velha  
Portugal  
T +351 234 529 810  
comercial@durit.pt

[durit.com/pt](http://durit.com/pt)

» **DURIT IBÉRICA, S.L.**

Calle Rozabella 6, EDIF. París  
1A Planta, Oficina 20  
28290 Las Rozas de Madrid  
España  
T +34 916 400 911  
duritiberica@durit.es

[durit.com/es](http://durit.com/es)

» **DURIT BRASIL LTDA**

Via de Penetração III, 519  
Centro Industrial de Aratu  
43700-000 Simões Filho/Bahia  
Brazil  
T +55 71 2106-0544  
comercial@durit.com.br

[durit.com.br](http://durit.com.br)

» **DURIT HARTMETALL GMBH**

Linderhauser Straße 139  
D-42279 Wuppertal  
Germany  
T +49 202 55 109 0  
F +49 202 55 109 25  
info@durit.de

[durit.com](http://durit.com)

**takes you to EXTREMES**

